

# Wall Mounted Touch Panel

Model No.: T21, T22, T24, T25

4 Zone/1-5 color/Glass touch panel/Color slide/Wireless remote 30m distance/AAA x 2 battery



T21  
4 Zone dimming



T22  
4 Zone CCT



T24  
4 Zone RGB/RGBW



T25  
4 Zone RGB+CCT

## Features

- Touch panel 4 zone 1-5 color RF remote.
- Each zone can remote control multiple RF 2.4G LED controllers.
- Ultra sensitive high strength glass touch panel with touch color slide in the middle.
- Smooth and accurate color adjustment by touching the color slide.
- Touch keys with chord tones and LED indicator.
- Free installation, no wiring, removable.
- AAA x 2 battery powered.
- White & Black glass panel available.

CE RoHS LVD RED

## Technical Parameters

| Input and Output |  |
|------------------|--|
| Output signal    | RF(2.4GHz)                               |
| Working voltage  | 3VDC(AAA x 2)                            |
| Working current  | < 5mA(Without tune)<br>< 20mA(with tune) |
| Standby current  | < 20μA                                   |
| Standby time     | 1 year                                   |
| Remote distance  | 30m (Barrier-free space)                 |

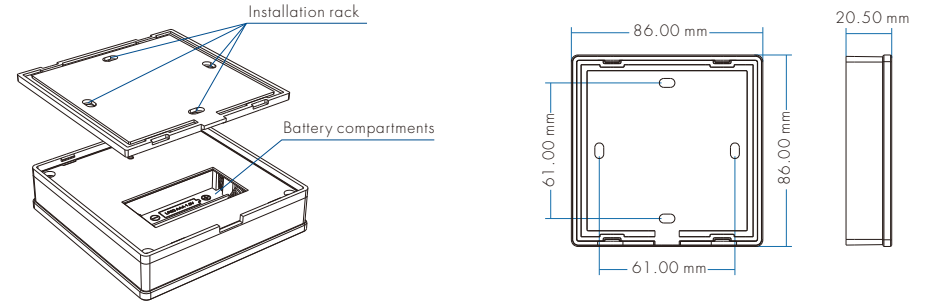
| Environment             |                   |
|-------------------------|-------------------|
| Operation temperature   | Ta: -30°C ~ +55°C |
| Case temperature (Max.) | Tc: +65°C         |
| IP rating               | IP20              |

| Safety and EMC       |   |
|----------------------|---|
| EMC standard (EMC)   | ETSI EN 301 489-1 V2.2.3<br>ETSI EN 301 489-17 V3.2.4 |
| Safety standard(LVD) | EN 62368-1:2020+A11:2020                              |
| Radio Equipment(RED) | ETSI EN 300 328 V2.2.2                                |
| Certification        | CE,EMC,IVD,RED  |

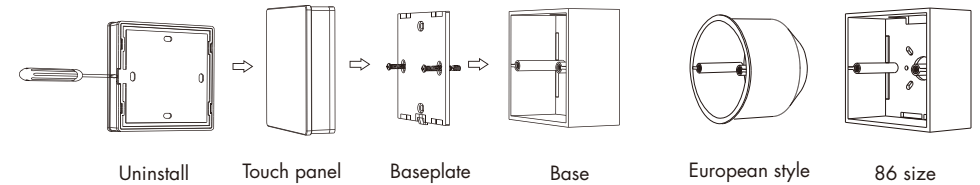
| Warranty |         |
|----------|---------|
| Warranty | 5 years |

| Weight       |      |
|--------------|------|
| Net weight   | 156g |
| Gross weight | 192g |

## Mechanical Structures and Installations



Installation diagram:



Typical base as below:

To fix the panel, two options are offered for selection:

- Option 1: fix it on the wall with two screws.
- Option 2: adhere it to the wall with paster.

## Match with RF LED controller (two match ways)

End user can choose the suitable match/delete ways. Two options are offered for selection:

### Use the controller's Match key

Match:  
Short press match key, immediately press zone key of the touch panel.  
The LED indicator fast flash a few times means match is successful.

Delete:  
Press and hold match key for 5s to delete all match.  
The LED indicator fast flash a few times means all matched remotes were deleted.

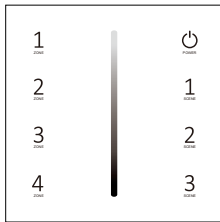
### Use Power Restart

Match:  
Switch off the power of the receiver, then switch on power, repeat again.  
Immediately short press zone key 3 times on the touch panel.  
The light blinks 3 times means match is successful.

Delete:  
Switch off the power of the receiver, then switch on power, repeat again.  
Immediately short press zone key 5 times on the touch panel.  
The light blinks 5 times means all matched remotes were deleted.

## Key function

## T21 Single color panel



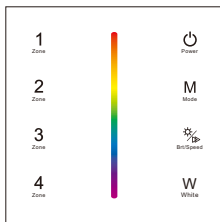
- Turn on/off all zone light.  
 Brightness slide.  
 — Short press recall scene. Long press 2s to save the current state into 1/2/3.  
 — Short press turn on zone light and select zone simultaneously, long press 2s turn off zone light. Short press multiple zone key fastly, will select multiple zone synchronously. 4 zone control separately or synchronously, each zone could control multiple receivers.

## T22 Dual color panel



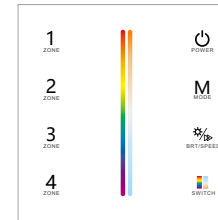
- Turn on/off all zone light.  
 Color temperature.  
 Brightness +, 10 levels.  
 Brightness -, 10 levels.  
 — Short press recall scene. Long press 2s to save the current state into the scene.  
 — Short press turn on zone light and select zone simultaneously, long press 2s turn off zone light. Short press multiple zone key fastly, will select multiple zone synchronously. 4 zone control separately or synchronously, each zone could control multiple receivers.

## T24 RGBW panel



- Turn on/off all zone light.  
 Color slide.  
 — Short press play 10 built-in mode, long press run mode-cycle.  
 — Adjust dynamic mode speed or static color brightness, 10 levels.  
 — Short press turn on/off W channel, long press adjust W channel brightness.  
 — Short press turn on zone light and select zone simultaneously, long press 2s turn off zone light. Short press multiple zone key fastly, will select multiple zone synchronously. 4 zone control separately or synchronously, each zone could control multiple receivers.

## T25 RGB+CCT panel



- Turn on/off all zone light.  
 RGB color / Color temperature slide.  
 Switch between RGB color / Color temperature slide.  
 — Short press play 10 built-in mode, long press run mode-cycle.  
 — Adjust dynamic mode speed or static color brightness, 10 levels.  
 — Short press turn on zone light and select zone simultaneously, long press 2s turn off zone light. Short press multiple zone key fastly, will select multiple zone synchronously. 4 zone control separately or synchronously, each zone could control multiple receivers.

**Note:** After touch power key to turn off light, long press power key for 5 seconds will turn on or turn off tone.

## Safety information

1. Read all instructions carefully before you begin this installation.
2. When installing battery, pay attention to the battery positive and negative polarity.  
A long time without the remote control, remove the battery.  
When remote distance becomes smaller and insensitive, replace the battery.
3. If no response from the receiver, please re-match the remote.
4. Gently handle remote, beware of falling.
5. For indoor and dry location use only.