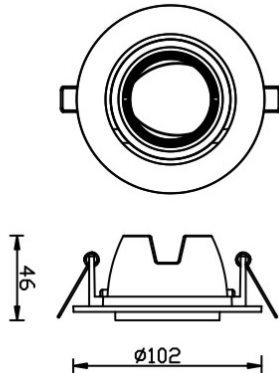


INSTALLATION INSTRUCTION

Model: VT-700
SPOTLIGHT FITTING



INTRODUCTION

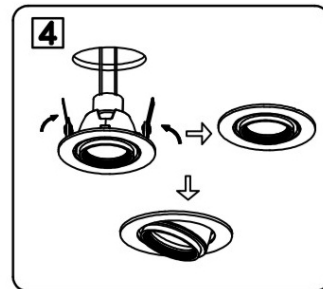
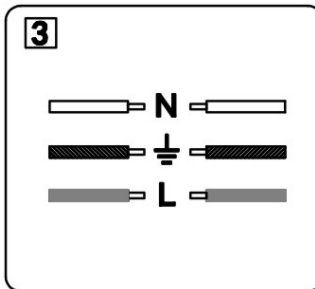
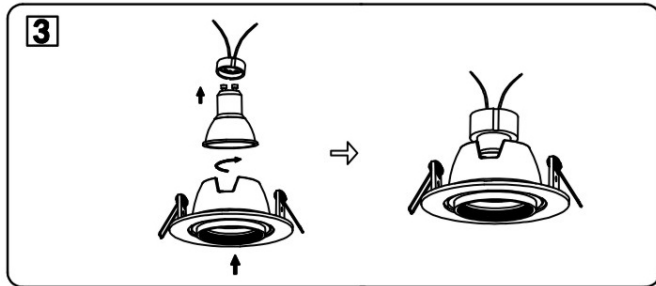
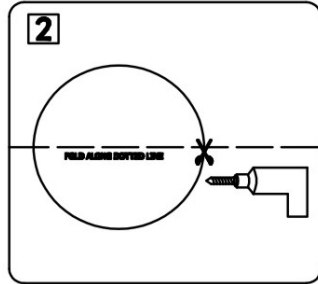
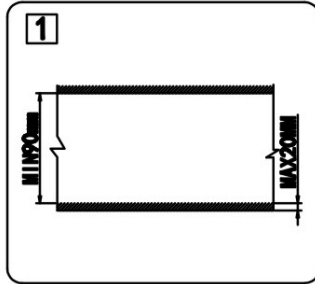
Thank you for selecting and buying V-TAC LED Spotlight Fitting. V-TAC will serve you the best. Please read these instructions carefully before starting the installation and keep this manual handy for future reference. If you have any other query, please contact our dealer or local vendor from whom you have purchased the product. They are trained and ready to serve you at the best.

INSTALLATION INSTRUCTION

1. Switch off the power.
2. Ensure that the void depth is a minimum of 90mm, the thickness of ceiling is a maximum of 20mm. (Picture 1)
3. Cut a hole using an appropriate tool according to the cut-out. (Picture 2)
4. When open the package, take out the fixture and install the GU lamp as the step 3.
5. Connect the wire of the driver to mains (110V-220V) in a correct way and put the driver into the ceiling properly. (Picture 4)
6. Push the spring clips upwards and fit into the ceiling hole (Picture 5), ensure the product is sitting properly in hole.
7. Switch on the power if above steps are done properly without mistakes.

V-TAC[®]

INNOVATIVE LED LIGHTING



WARRANTY

- This product is warranty from manufacturing defect only.
- The warranty is valid for 2 years from the date of purchase.
- The warranty does not apply to damage caused by installation or abnormal wear and tear.
- The company gives no warranty against damage to any surface due to incorrect removal and installation of the product.