



Meaningful Innovation.

WEEE Number: 80133970

INSTRUCTION MANUAL

OUTDOOR SERIES
WALL LAMP



TECHNICAL DATA

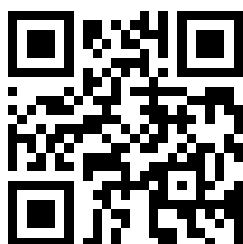
MODEL	VT-1183
SKU	10470
MAX. WATTS	18W
INPUT POWER	AC: 220-240V, 50Hz
HOLDER	E27 (Bulb not included)
MATERIAL	Plastic+Stainless Steel
UNIT COLOUR	BLACK
DIMENSION	Ø76x400 mm

IP44
RATING

02
YEAR
WARRANTY*

INTRODUCTION & WARRANTY

Thank you for selecting and buying V-TAC product. V-TAC will serve you the best. Please read these instructions carefully before starting the installation and keep this manual handy for future reference. If you have any another query, please contact our dealer or local vendor from whom you have purchased the product. They are trained and ready to serve you at the best. The warranty is valid for 2 years from the date of purchase. The warranty does not apply to damage caused by incorrect installation or abnormal wear and tear. The company gives no warranty against damage to any surface due to incorrect removal and installation of the product. The products are suitable for 10-12 Hours Daily operation. Usage of product for 24 Hours a day would void the warranty. This product is warranted for manufacturing defects only.



MULTI-LANGUAGE MANUAL QR CODE

Please scan the QR code to
access the manual in multiple languages.

In case of any query/issue with the product, please reach out to us at: support@v-tac.eu
For More products range, inquiry please contact our distributor or nearest dealers.
V-TAC EUROPE LTD. Bulgaria, Plovdiv 4000, bul.L.Karavelow 9B

INSTRUCTIONS FOR THE LIGHT

- Please make sure to turn off the power before starting the installation.
- Installation must be performed by a qualified electrician.
- Proper grounding should be ensured throughout the installation.

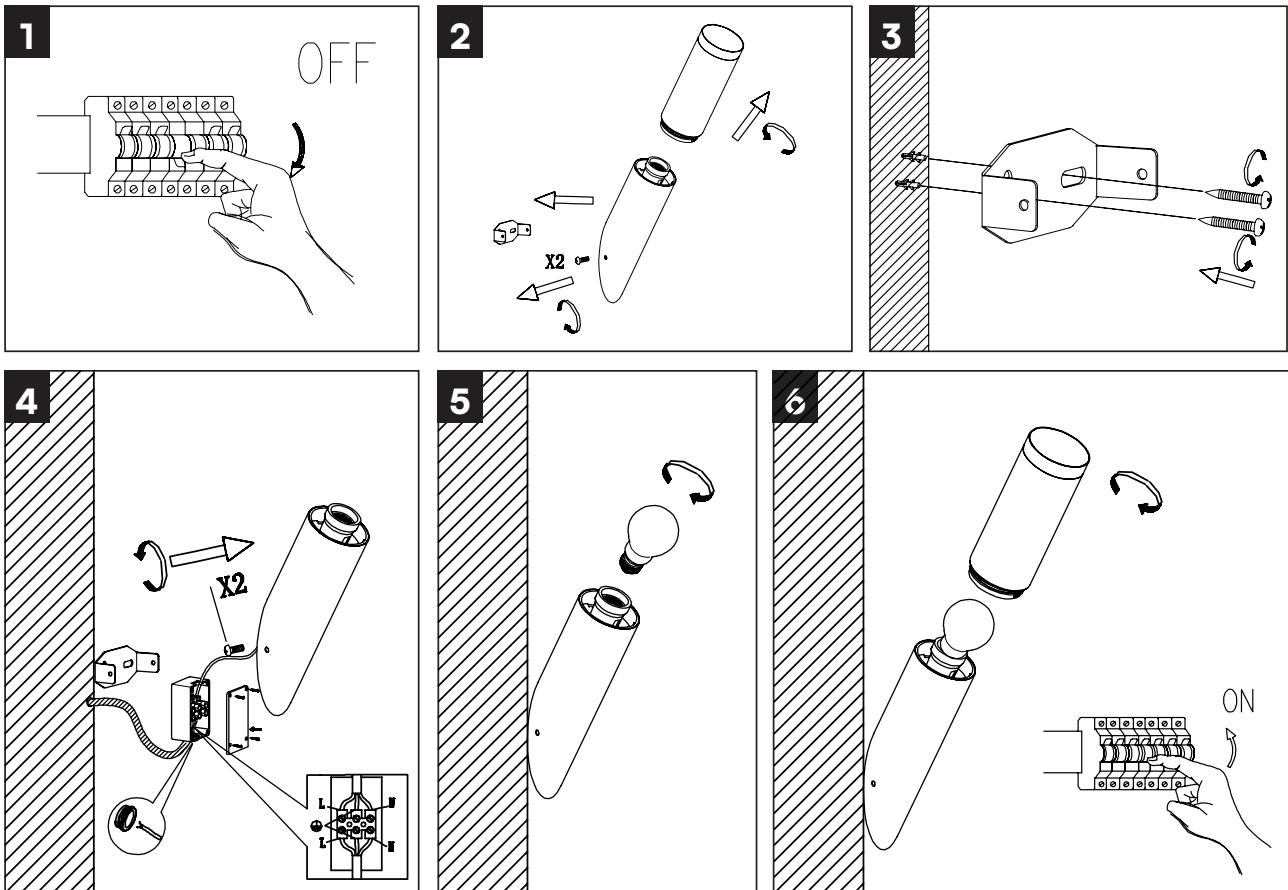


This marking indicates that this product should not be disposed of with other household wastes.



Caution, Risk of electric shock

INSTALLATION DIAGRAM



INSTALLATION INSTRUCTIONS

1. Turn off the power switch.
2. Disconnect the Lamp parts for fixing in wall.
3. Fix the base to the wall with the screws.
4. Connect to the power supply according to the drawing.
5. Install the bulb on the E27 holder (Bulb is not included).
6. Close the Lamp and Switch on the power.

RoHS



UK
CA

