



Meaningful Innovation.

WEEE Number: 80133970

# INSTRUCTION MANUAL

## DECORATIVE CEILING FANS

### TECHNICAL DATA

**MODEL :** VT-5022      **SKU:** 217934, 217935

MOTOR: AC MOTOR

360° AIR FLOW

BLADES: 7 ABS BLADES

REVOLUTIONS PER MINUTE: 1100±10 RPM

3 SPEEDS AND LIGHT REMOTE CONTROL

MOTOR POWER: 35W

LED COLOR: LED 3 IN 1 CCT

3000K/4000K/6500K

UNIT COLOR: ACRYLIC SHADE

INPUT VOLTAGE: 220V,50HZ,45W (ENERGY-SAVING)

G.W.: 5.3KGS / N.W.: 3.8KGS

INSTALLATION TYPE: SURFACED

IP RATING : IP20

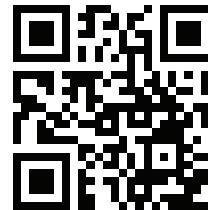
DIMENSION: Ø600\*H200MM



SKU:217934



SKU:217935



### MULTI-LANGUAGE MANUAL QR CODE

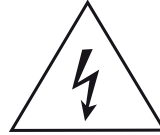
Please scan the QR code to access the manual in multiple languages.

## INTRODUCTION & WARRANTY

Thank you for selecting and buying V-TAC product. V-TAC will serve you the best. Please read these instructions carefully before starting the installation and keep this manual handy for future reference. If you have any another query, please contact our dealer or local vendor from whom you have purchased the product. They are trained and ready to serve you at the best. The warranty is valid for 2 years from the date of purchase. The warranty does not apply to damage caused by incorrect installation or abnormal wear and tear. The company gives no warranty against damage to any surface due to incorrect removal and installation of the product. The products are suitable for 10-12 Hours Daily operation. Usage of product for 24 Hours a day would void the warranty. This product is warranted for manufacturing defects only.



This marking indicates that this product should not be disposed of with other household wastes.



Caution, risk of electric shock.

IN CASE OF ANY QUERY/ISSUE WITH THE PRODUCT, PLEASE REACH OUT TO US AT: [SUPPORT@V-TAC.EU](mailto:SUPPORT@V-TAC.EU)  
FOR MORE PRODUCTS RANGE, INQUIRY PLEASE CONTACT OUR DISTRIBUTOR OR NEAREST DEALERS.  
V-TAC EUROPE LTD. BULGARIA, PLOVDIV 4000, BUL.L.KARAVELOW 9B

IN CASE OF ANY QUERY/ISSUE WITH THE PRODUCT, PLEASE REACH OUT TO US AT: [SUPPORT@V-TAC.EU](mailto:SUPPORT@V-TAC.EU)  
FOR MORE PRODUCTS RANGE, INQUIRY PLEASE CONTACT OUR DISTRIBUTOR OR NEAREST DEALERS.  
V-TAC WEST EUROPE LTD. GROUND FLOOR, 71 LOWER BAGGOT STREET, DUBLIN 02, IRELAND D02 P593

IN CASE OF ANY QUERY/ISSUE WITH THE PRODUCT PLEASE REACH OUT TO US AT  
[SUPPORT@VTACEXPORTS.COM](mailto:SUPPORT@VTACEXPORTS.COM) V-TAC HOUSE, KELPATRICK ROAD, SLOUGH, BERKSHIRE, SL1 6BW, UK.

RoHS



UK  
CA



---

## **WARNING**

### **Power Safety**

- Ensure that the power is turned off at the main fuse or circuit panel before any repairs or installations.

### **Water and Moisture Exposure**

- Do not immerse the fan in water.
- Avoid allowing any internal components, especially the circuit plate, to get wet, as this may pose safety risks and damage the unit.
- For indoor use only.

### **Cleaning Instructions**

- Clean the fan periodically using a soft cloth or brush.
- Do not use scouring pads, abrasive materials, or chemical cleaners, as these can damage the surface.
- Ensure the fan is turned off and unplugged before cleaning.

### **Storage Guidelines**

- When not in use, unplug the fan and store it in its original box in a cool, dry place.

### **Battery Precautions**

- Always ensure the battery compartment cover is properly closed.
- Keep batteries out of reach of children and pets; if swallowed, seek medical attention immediately.
- Do not attempt to recharge non-rechargeable batteries or expose batteries to fire.

### **Installation and Use**

- Installation should be performed by a certified electrician and must comply with local electrical regulations.
- Ensure all base and fan blade fixings are secured to prevent issues during operation.
- Maintain a minimum distance of 2.3 meters between the fan blades and the floor.
- The outlet box from which the fan is hung must support a minimum carrying capacity of 45 kg.

### **Operational Safety**

- Do not use the fan in confined spaces with explosive or toxic vapors.
-

- 
- Never connect the fan motor to a dimmer switch, as this may cause malfunction or damage.
  - The fan should be completely stopped before reversing its direction to prevent motor or controller damage.
  - Avoid inserting objects into the fan blades during operation.

### **Supervision Requirements**

- This appliance is not intended for use by children under 8 years of age.
- Children over 8 may use it under continuous supervision.
- Individuals with reduced physical, sensory, or mental capabilities should be supervised or instructed on safe operation.

### **General Safety Rules**

- Do not touch the appliance with wet hands or feet.
- Keep the appliance away from atmospheric conditions like rain and direct sunlight
- Do not operate the appliance near flammable liquids or gases.

### **Maintenance Checks**

- Regularly check support connections, brackets, and blade attachments for looseness and tighten as needed.
- If any visible signs of damage are observed, avoid direct contact with batteries.
- Wash eyes immediately if they come into contact with battery leakage.

### **Emergency Procedures**

- If unusual oscillation is observed, cease use immediately and consult the manufacturer or a qualified technician.
- For any repairs, contact the official Technical Support Service; do not attempt self-repairs.

### **Child Safety**

- Keep all packaging materials (plastic bags, boxes, etc.) away from children's reach to ensure safety.
-

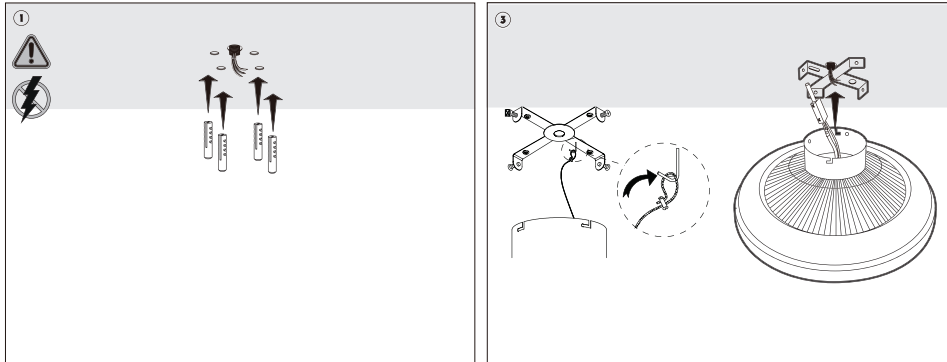
---

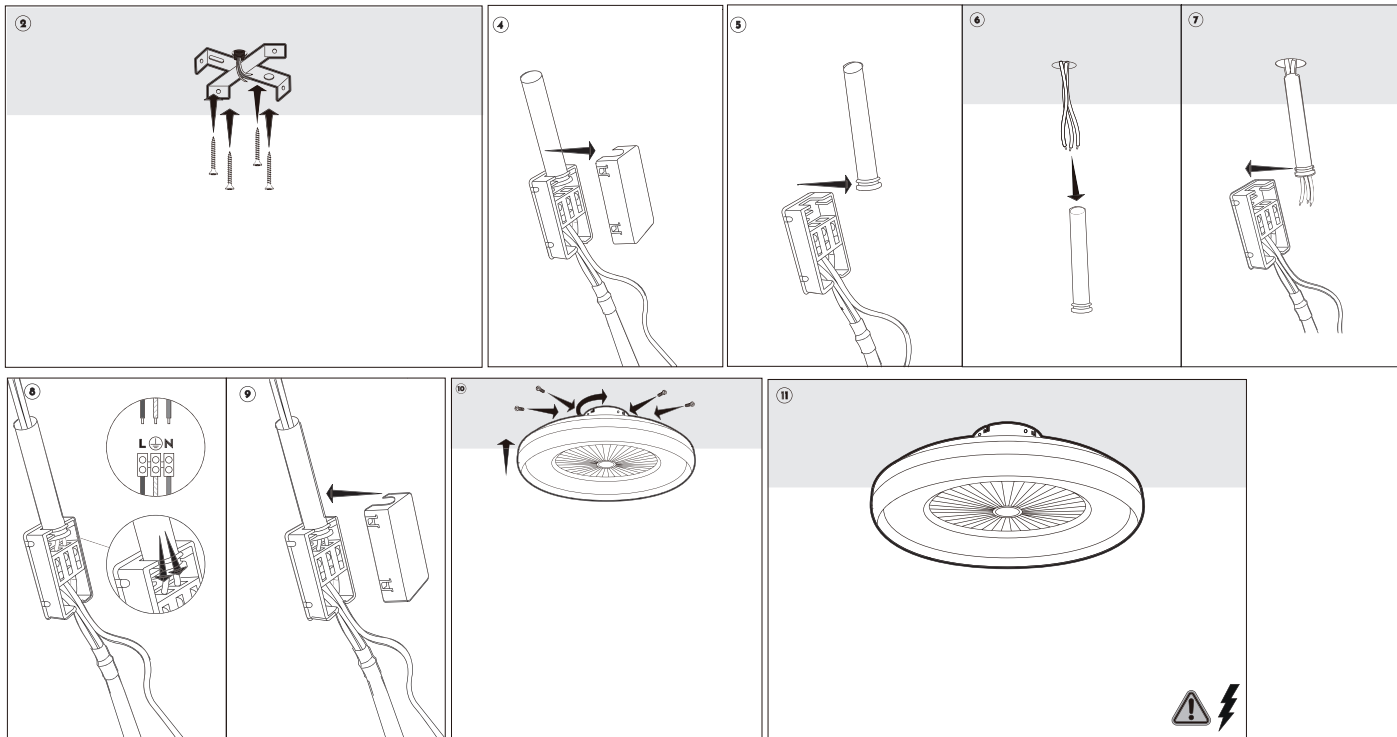
## PARTS AND COMPONENTS

- Before installation and disassembly of ceiling fans, please turn off the power supply first. Installation must be in the order of grounding wires, fire wires/ zero wires. Disassembly and assembly must be in the order of zero wires/fire wires/grounding wires in order to avoid electric shock.
- Install the cross panel to the ceiling, Reference

## REMOTE CONTROL AND WIRING INSTRUCTION

- Connect the power cord, The fan is then hung onto the mounted cross panel and the screws on the panel are locked. Make sure it's secure.

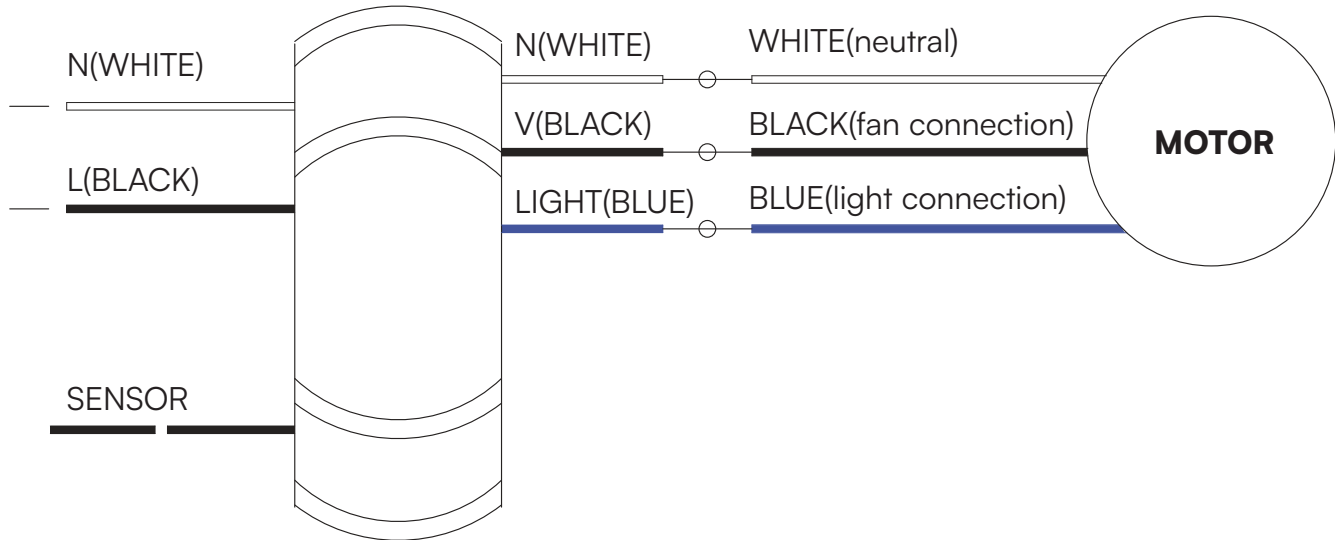




## REMOTE CONTROL AND WIRING DIAGRAM

- Connect the wires following the colour codes remote control as stated below

## WIRING DIAGRAM



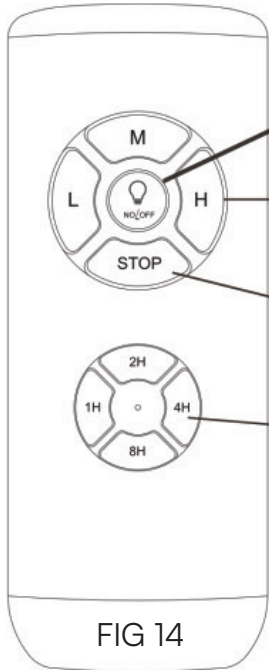
**FIG 9**

**WARNING:** Before using the direction switch, turn the fan off and make sure the fan has stopped rotating in order to prevent possible injuries and motor damage. Change direction by pushing the switch up or down when the fan is off.

---

## REMOTE CONTROL

Use the remote control to turn the fan on and off and to change speed.



### LIGHT ON/OFF

Fan Speed  
H - Highest speed  
M - Medium speed  
L - Lowest speed

### FAN STOP

Timer  
1H-Fan auto turn off after 1 hour  
2H-Fan auto turn off after 2 hours  
4H-Fan auto turn off after 4 hours  
8H-Fan auto turn off after 8 hours

## REPLACING BATTERIES

1. To replace the remote control batteries, press the battery cover and slide it towards the arrow direction.
2. This remote control requires 2 x AAA 1.5V battery.
3. Reassemble the battery compartment cover.

FIG 14

---



---

## CLEANING AND MAINTENANCE

1. Always disconnect the fan from the power supply and allow it to stop before cleaning it.
2. Clean the outside surface with a soft damp cloth.

## TROUBLESHOOTING

Before carrying out the checks detailed below, the fan must be without power supply.

### 1. The fan does not start

- Replace the remote control batteries if they are exhausted or not suitable.
- Check that there are no nearby devices that may be causing interference with the remote or reducing signal reception.
- Resynchronize the remote control. Check that the electrical connections are correct (must be carried out by a licensed electrician). Check fuses and switches, that the installation has voltage and it reaches the fan.

### 2. The fan makes excessive noise while rotating

- Allow a slight separation between the canopy and the ceiling, preventing them from touching directly.
- Check that the fixing screws of the blades, the fixing screws to the roof, the stem and the fastening elements are correctly tightened.

- If you replaced the original remote control or receiver, reinstall the supplied ones along with the fan.

### 3. The fan wobbles

Check that the fixing screws of the blades, the fixing screws to the roof, the stem and the fastening elements are correctly tightened.

### 4. The air flow is insufficient

Check that the blades rotate in the correct direction (Summer/Winter). Avoid nearby objects that may impede air circulation.

- Verify that the diameter of the blades of your fan is sufficient for the area of the room in which it is installed.
5. The light does not turn on
- Please check the connections are properly fixed according to the instruction manual.
-