



Meaningful Innovation.

WEEE Number: 80133970

# INSTRUCTION MANUAL

## LED HANGING DECORATIVE LAMP

### TECHNICAL DATA

MODEL	VT-7818
SKU	8023
WATTS	16 W
LUMENS	1820 Lm
BEAM ANGLE	270°
INPUT POWER	AC: 220-240V, 50/60Hz
CRI	>80
IP RATING	IP20
LIFE SPAN	20,000 Hours
ON/OFF CYCLE	>15,000 Times
DIMENSION	860x300 mm



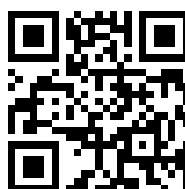
**02** YEAR  
WARRANTY\*

### INTRODUCTION & WARRANTY

Thank you for selecting and buying V-TAC product. V-TAC will serve you the best. Please read these instructions carefully before starting the installation and keep this manual handy for future reference. If you have any other query, please contact our dealer or local vendor from whom you have purchased the product. They are trained and ready to serve you at the best. The warranty is valid for 2 years from the date of purchase. The warranty does not apply to damage caused by incorrect installation or abnormal wear and tear. The company gives no warranty against damage to any surface due to incorrect removal and installation of the product. This product is warranted for manufacturing defects only.

### WARNING

1. Please make sure to turn off the power before starting the installation.
2. Installation must be performed by a qualified electrician.
3. The light source of this luminaire is not replaceable; when the light source reaches its end of life the whole luminaire shall be replaced.
4. Proper grounding should be ensured throughout the installation.
5. For Indoor Use only



### MULTI-LANGUAGE MANUAL QR CODE

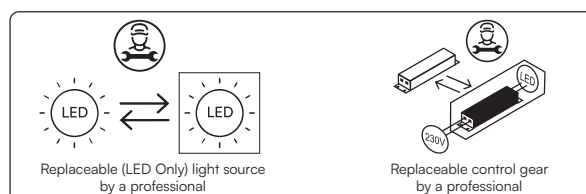
Please scan the QR code to access the manual in multiple languages.



This marking indicates that this product should not be disposed of with other household wastes.

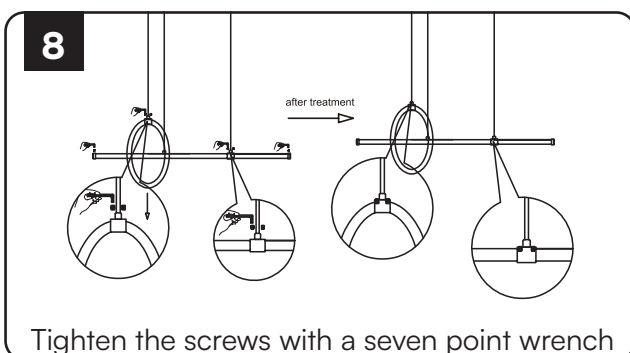
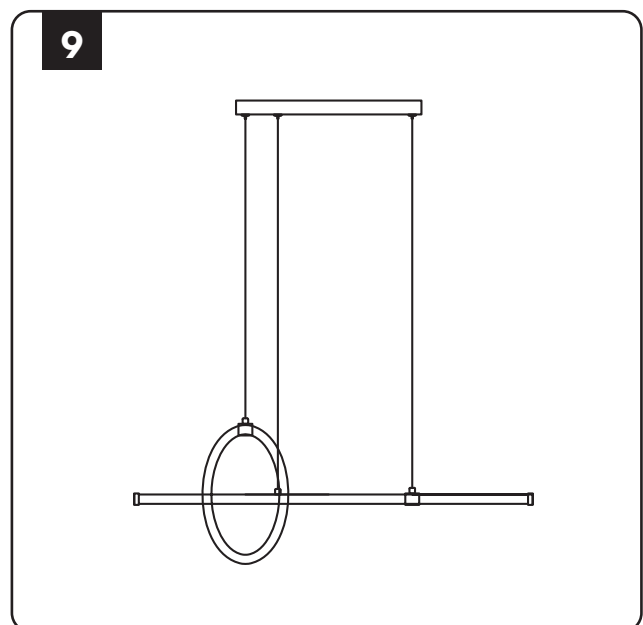
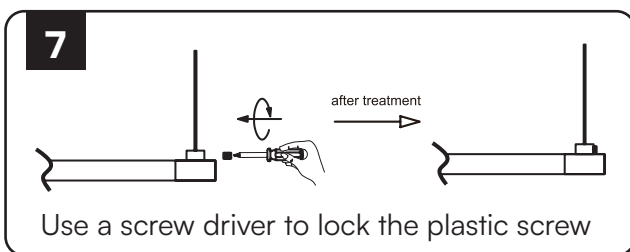
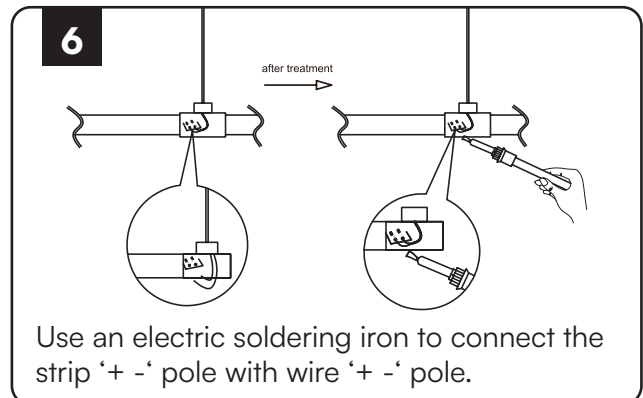
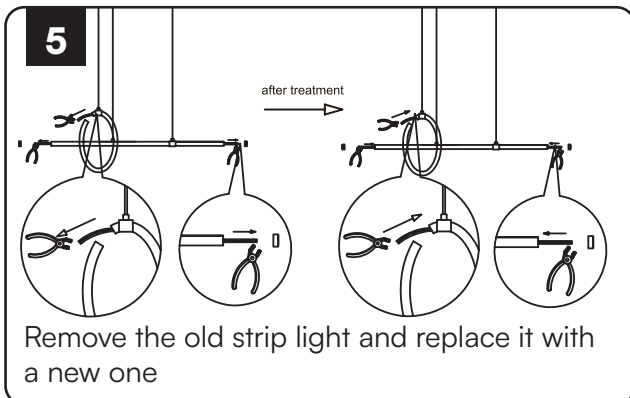
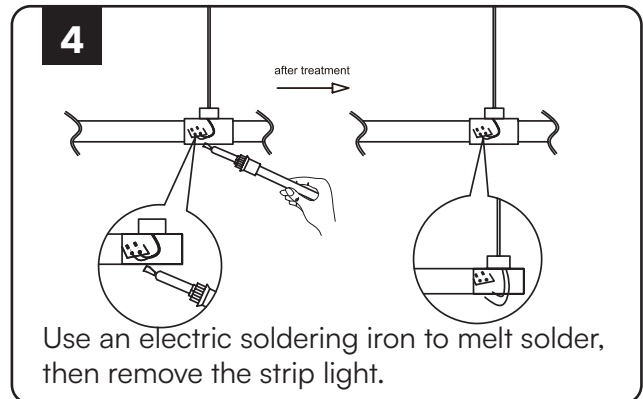
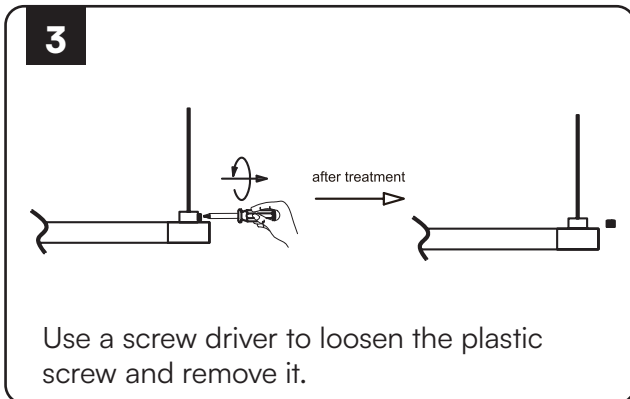
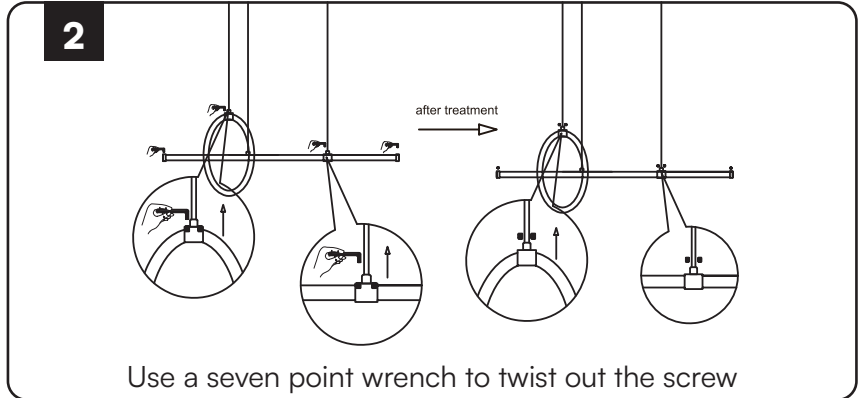
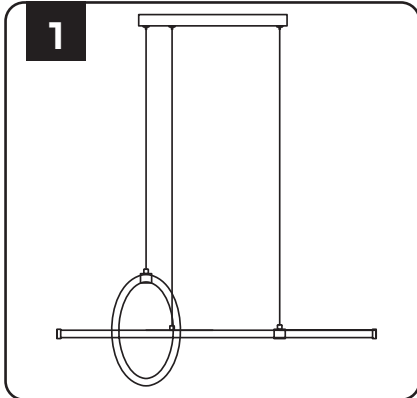


Caution, risk of electric shock.



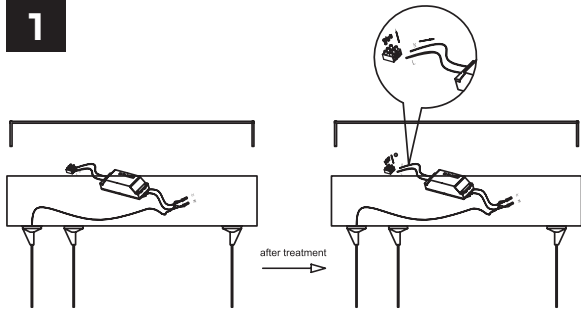
In case of any query/issue with the product, please reach out to us at: [support@v-tac.eu](mailto:support@v-tac.eu)  
For More products range, inquiry please contact our distributor or nearest dealers.  
V-TAC EUROPE LTD. Bulgaria, Plovdiv 4000, bul.L.Karavelov 9B

# INSTALLATION INSTRUCTION



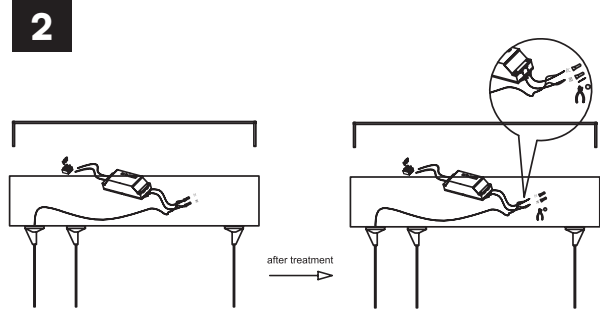
# WIRING CONNECTION

1



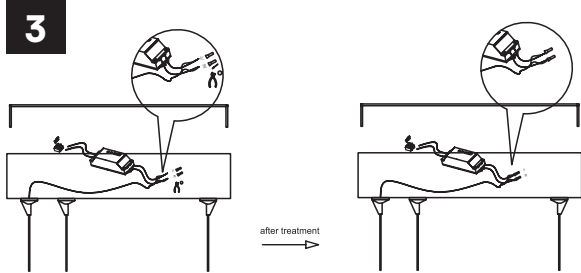
Loosen the terminal base L and N screws, and pull out the blue brown wire

2



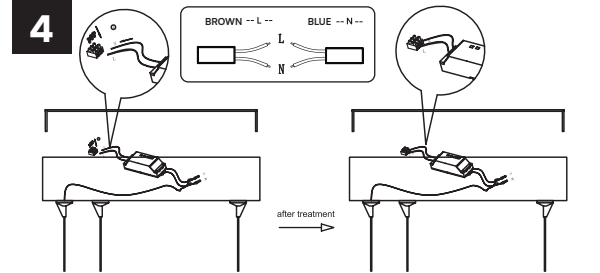
Cut the terminal cap and remove the driver

3



Connect the '+ -' pole of the driver with '+ -' pole of the main line, then install the terminal cap with pliers

4



Insert the blue brown wire of the driver into the terminal base and use a screwdriver to lock the L and N screws

RoHS



UK  
CA

