



Meaningful Innovation.

WEEE Number: 80133970

INSTRUCTION MANUAL

LED BOLLARD LAMP



IP54
RATING

05 YEAR
WARRANTY*

TECHNICAL DATA

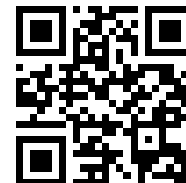
MODEL	VT-11107	
WATTS	6W	
COLOR CODE	3000K	4000K
LUMENS	520	620
BEAM ANGLE	24	
ON/OFF CYCLE	>15,000 TIMES	
LONG LIFE	20,000 HOURS	
CRI	>80	
DIMENSION	1025X180X120X35mm	
MATERIAL	ALUMINUM	
INPUT POWER	AC:220-240V, 50/60Hz	

INTRODUCTION & WARRANTY

Thank you for selecting and buying V-TAC product. V-TAC will serve you the best. Please read these instructions carefully before starting the installation and keep this manual handy for future reference. If you have any another query, please contact our dealer or local vendor from whom you have purchased the product. They are trained and ready to serve you at the best. The warranty is valid for 5 years from the date of purchase. The warranty does not apply to damage caused by incorrect installation or abnormal wear and tear. The company gives no warranty against damage to any surface due to incorrect removal and installation of the product. The products are suitable for 10-12 Hours Daily operation. Usage of product for 24 Hours a day would void the warranty. This product is warranted for manufacturing defects only.

WARNING!

1. Please make sure to turn off the power before starting the installation.
2. Installation should only be done by a certified electrician.
3. The light source of this luminaire is not replaceable, when the light source reaches its end of life the whole luminaire should be replaced.
4. Proper grounding should be ensured throughout the installation.

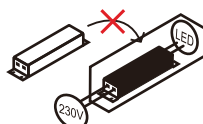


**MULTI-LANGUAGE
MANUAL QR CODE**

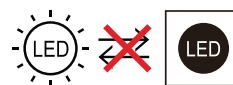
Please scan the QR code to access the manual in multiple languages.



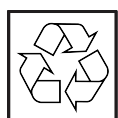
This marking indicates that this product should not be disposed of with other household wastes.



Non-replaceable control gear



Non-replaceable light source

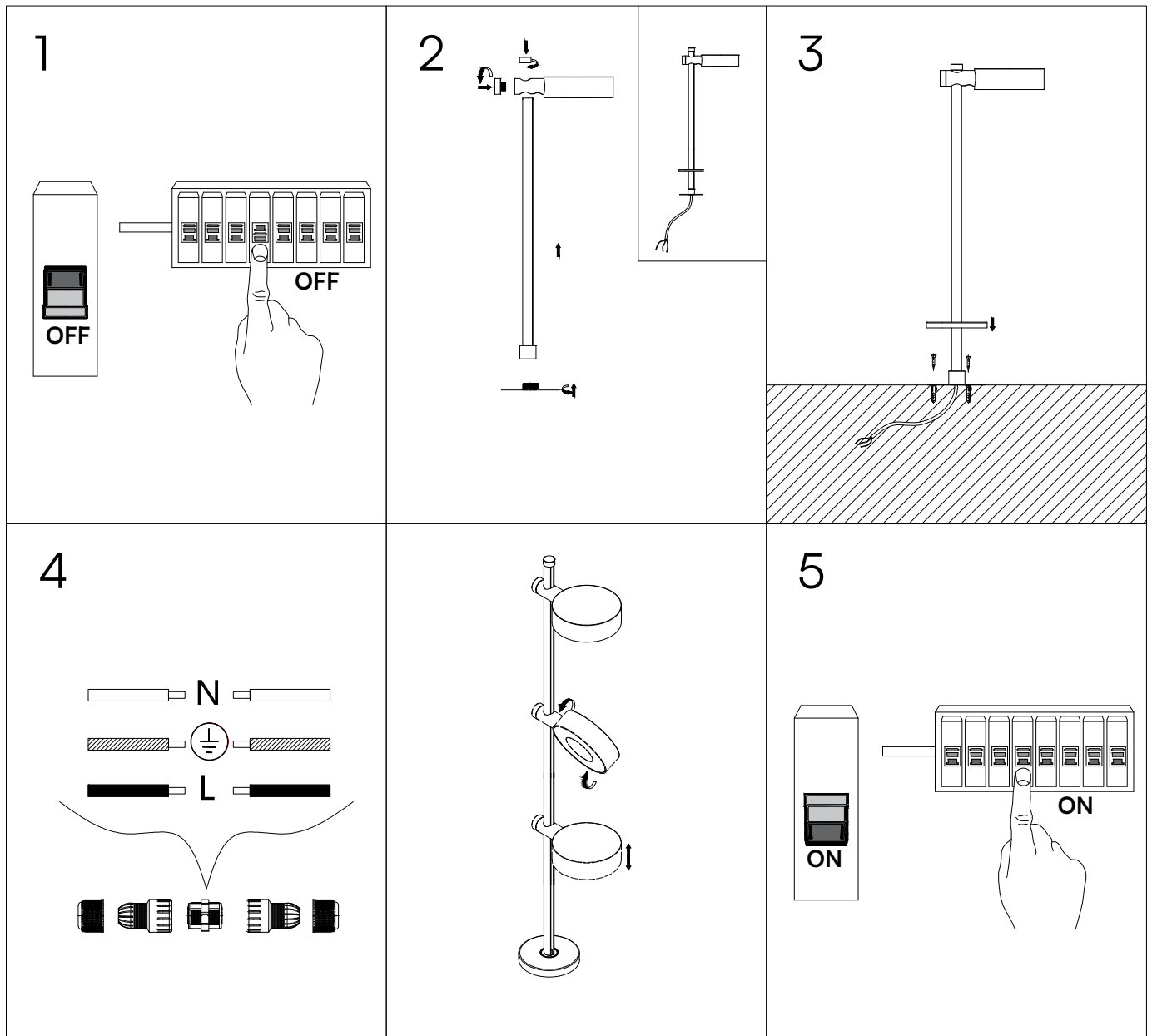


Caution, risk of electric shock.



IN CASE OF ANY QUERY/ISSUE WITH THE PRODUCT, PLEASE REACH OUT TO US AT: SUPPORT@V-TAC.EU
 FOR MORE PRODUCTS RANGE, INQUIRY PLEASE CONTACT OUR DISTRIBUTOR OR NEAREST DEALERS.
 V-TAC EUROPE LTD. BULGARIA, PLOVDIV 4000, BUL.L.KARAVELOW 9B

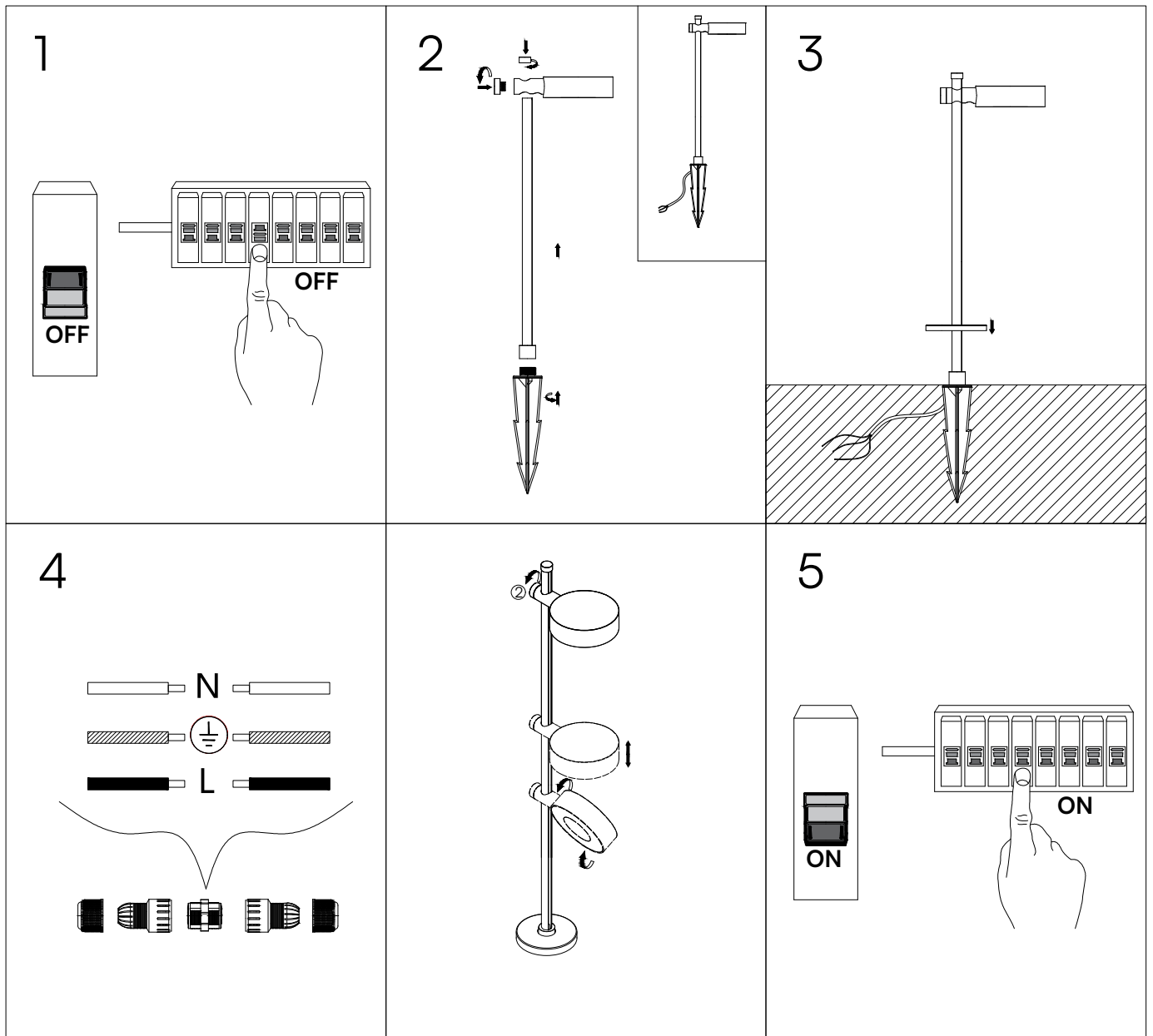
LAMP POST INSTALLATION DIAGRAM:



LAMP POST ASSEMBLING AND INSTALLATION

- Switch off the light
- Put the lamp through the pole and tighten the cap at the desired length
- Cover the tip of the pole with the cap and Secure the wire inside the pole
- Cover the bottom of the pole with the cap
- Insert the first mounting plate through the bottom of the Pole
- Screw the second mounting plate on the bottom end of the pole
- Drill the second mounting plate on the floor and let the first mounting plate glide over
- Adjust the angle of the lamp as desired
- Switch on the light

SPIKE INSTALLATION DIAGRAM:



SPIKE INSTRUCTION

- Switch off the light
- Screw the Spike on the bottom of the Pole
- Switch on the light